

# **User Manual of SADP Software**

**Search Active Device Protocol**

**V2.0**

# Table of Contents

<b>Chapter 1</b>	<b>Overview.....</b>	<b>1</b>
1.1	Description.....	1
1.2	System Requirements .....	1
<b>Chapter 2</b>	<b>Running the SADP Software .....</b>	<b>2</b>
2.1	Running SADP with Administrator Account .....	2
2.2	Running SADP with other Admin Accounts.....	2
2.3	Running SADP with Non-admin Accounts.....	3
<b>Chapter 3</b>	<b>Operating the SADP Software.....</b>	<b>6</b>
3.1	Searching Active Devices Online .....	6
3.2	Modifying Network Parameters.....	7
3.3	Restoring Default Password .....	7

# Chapter 1 Overview

## 1.1 Description

Search Active Devices Protocol software is a kind of user-friendly and installation-free online device search tool. It searches the active online devices within your subnet and displays the information of the devices. You can also modify the basic network information of the devices using this software.

**Note:** Online intelligent devices search is not supported by SADP v2.0.

## 1.2 System Requirements

**Operating System:** Microsoft Windows XP/ Server2000/ Server 2003 32bits,  
Windows 7 / Server 2008 32/64 bits;

**CPU:** Intel Pentium4 3.0 @3.00GHz or higher;


**RAM:** 1GB or higher;

**Display:** RADEON X700 series;

**Minimum Resolution:** 1024\*768.

# Chapter 2 Running the SADP Software

## 2.1 Running SADP with Administrator Account

Log in the computer as the administrator, and double-click  APT-SADP to enter the SADP software main interface as shown in Figure 2-1.

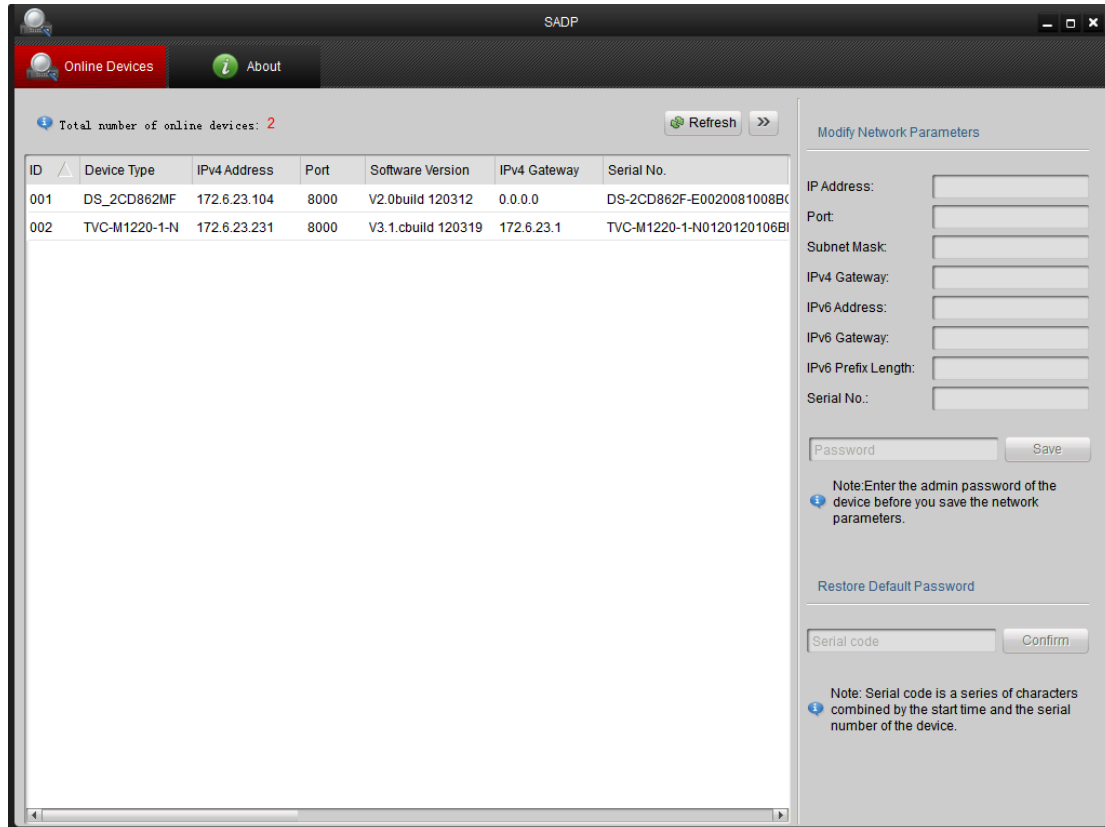


Figure 2-1 SADP Interface

## 2.2 Running SADP with other Admin Accounts


You can also run the SADP software with other accounts of the admin group.

- **For Windows 2000/XP/2003**

Refer to *Section 2.1 Running SADP with Administrator Account*.

- **For Windows Vista/Win7/2008**

**Steps:**

1. Right-click  APT-SADP and click **Run as administrator**.

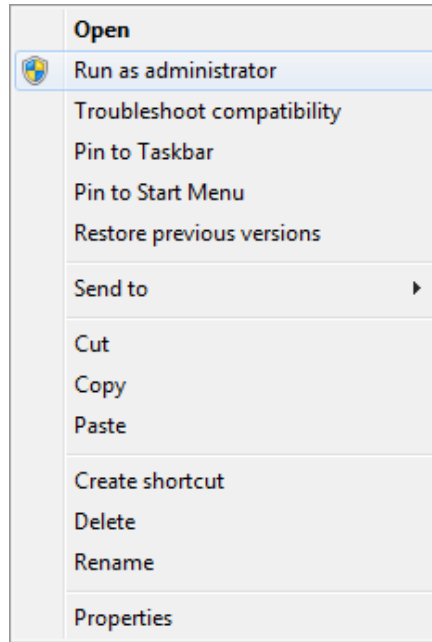


Figure 2-2 Run as Administrator

2. Click  on the pop-up **User Account Control** dialog box to allow the program and enter the main interface of SADP software.

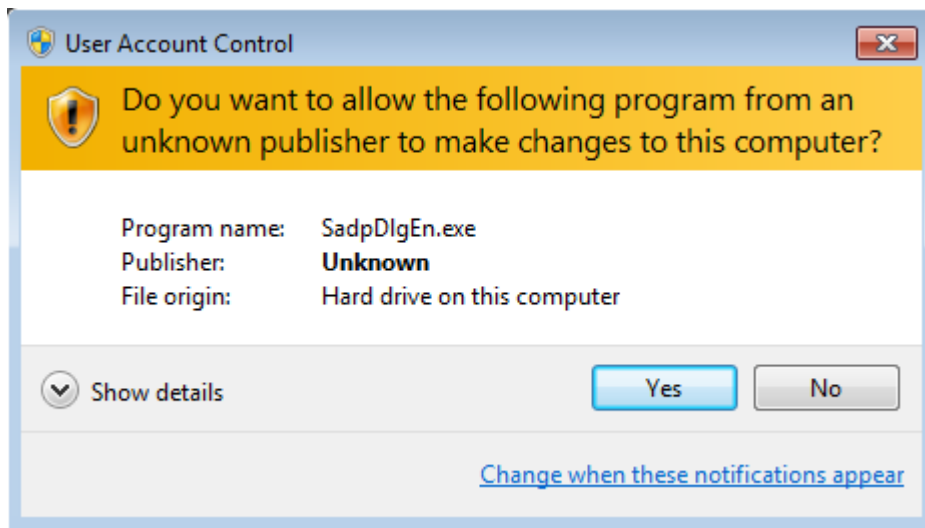



Figure 2-3 User Account Control Dialog Box

## 2.3 Running SADP with Non-admin Accounts

If you log in the operating system with the non-admin accounts (e.g. users or guests), you need to run the software as administrator or as other accounts of the admin group.

- For Windows 2000/XP/2003

**Steps:**

1. Right-click  and click **Run as**.

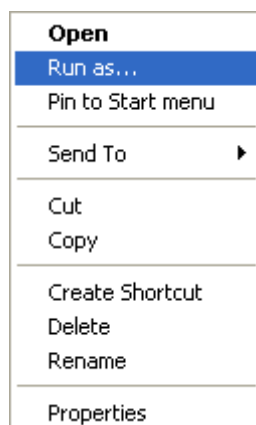
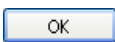


Figure 2-4 Run as Administrator

2. Input the username and password of the administrator or other accounts of the admin group and click  to enter the main interface of SADP software.

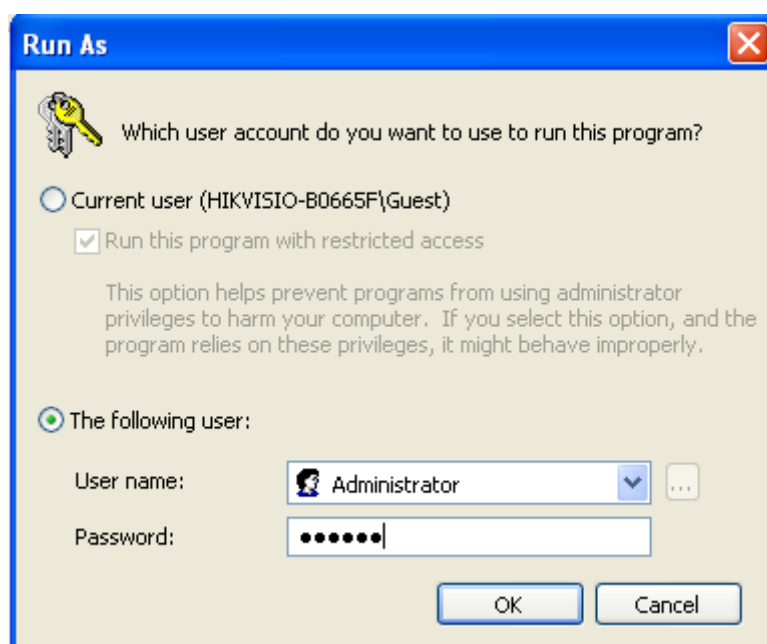



Figure 2-5 Input Username and Password

- **For Windows Vista/Win7/2008**

1. Right-click  and click **Run as administrator**.

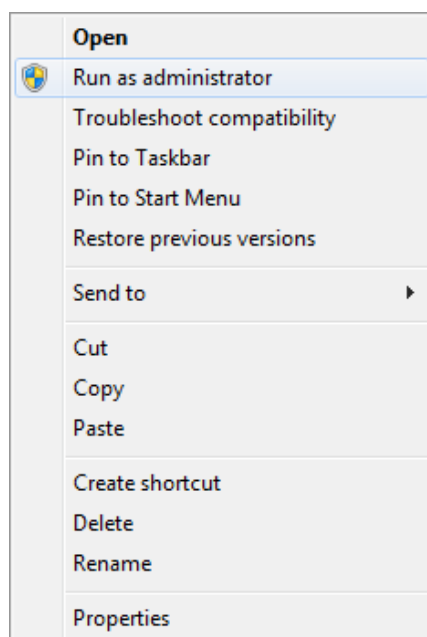


Figure 2-6 Run as Administrator

2. Input the password of administrator and click  to enter SADP.

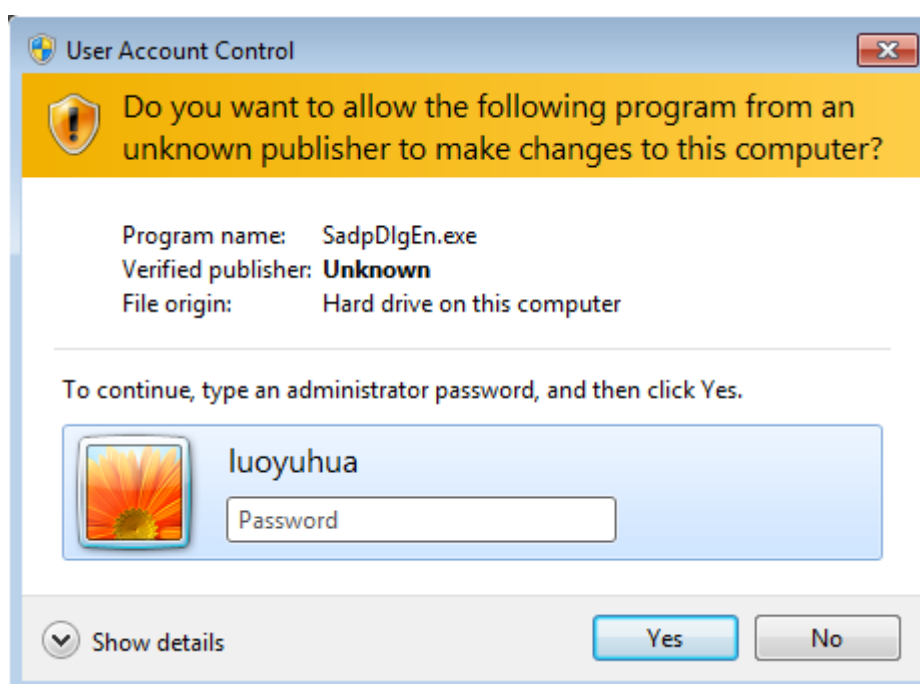


Figure 2-7 Input Administrator Password

# Chapter 3 Operating the SADP Software

## 3.1 Searching Active Devices Online

- **Search online devices automatically**

After launch the SADP software, it automatically searches the online devices every 15 minutes from the subnet where your computer locates. It displays the total number and information of the searched devices in the **Online Devices** interface. Device information including the device type, IP address, port number, gateway, etc. will be displayed.

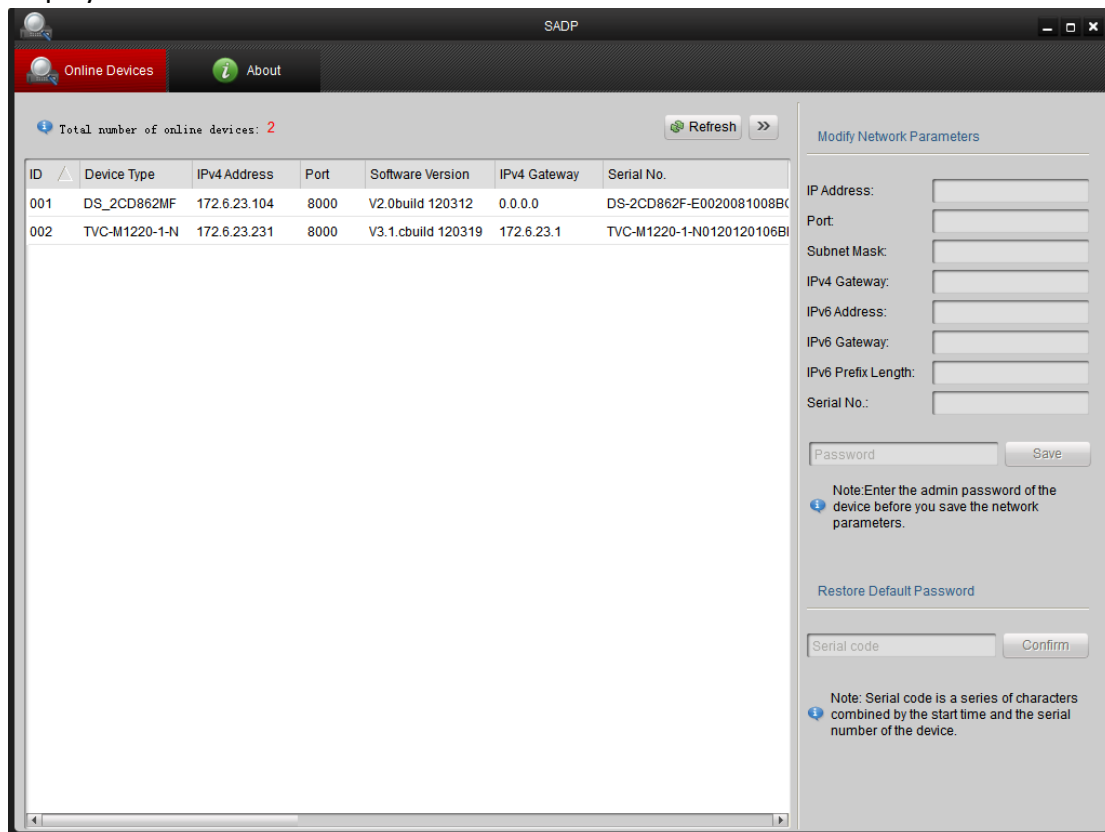
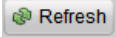




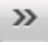
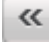
Figure 3-1 Searching Online Devices

**Note:** Device can be searched and displayed in the list in 15 seconds after it went online; it will be removed from the list in 45 seconds after it went offline.

- **Search online devices manually**

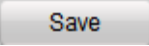
You can also click  to refresh the online device list manually. The newly searched devices will be added to the list.



**Note:** You can click  or  on each column heading to order the information; you can click  to expand the device table and hide the network parameter panel on the right side, or click  to show the network parameter panel.

## 3.2 Modifying Network Parameters

### Steps:

1. Select the device to be modified in the device list and the network parameters of the device will be displayed in the **Modify Network Parameters** panel on the right side.
2. Edit the modifiable network parameters, e.g., IP address and port number.
3. Enter the password of the admin account of the device in the **Password** field and click  to save the changes.

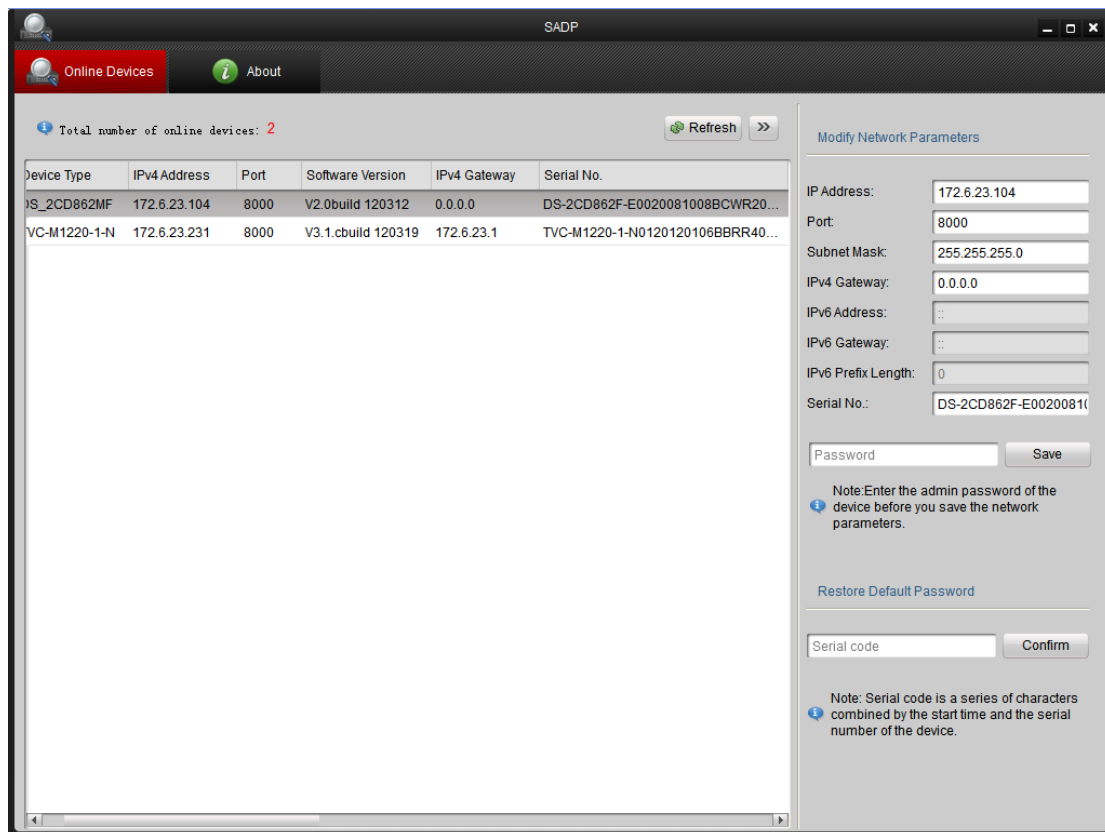


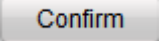
Figure 3-2 Modify Network Parameters

## 3.3 Restoring Default Password

### Steps:

1. Contact our technical engineers to get the serial code.

**Note:** Serial code is a series of characters combined by the start time and the serial number of the device.

2. Input the code in the **Serial code** field and click  to restore the default password.